

WALL CABINET WITH DOORS

CABINETS - WALL

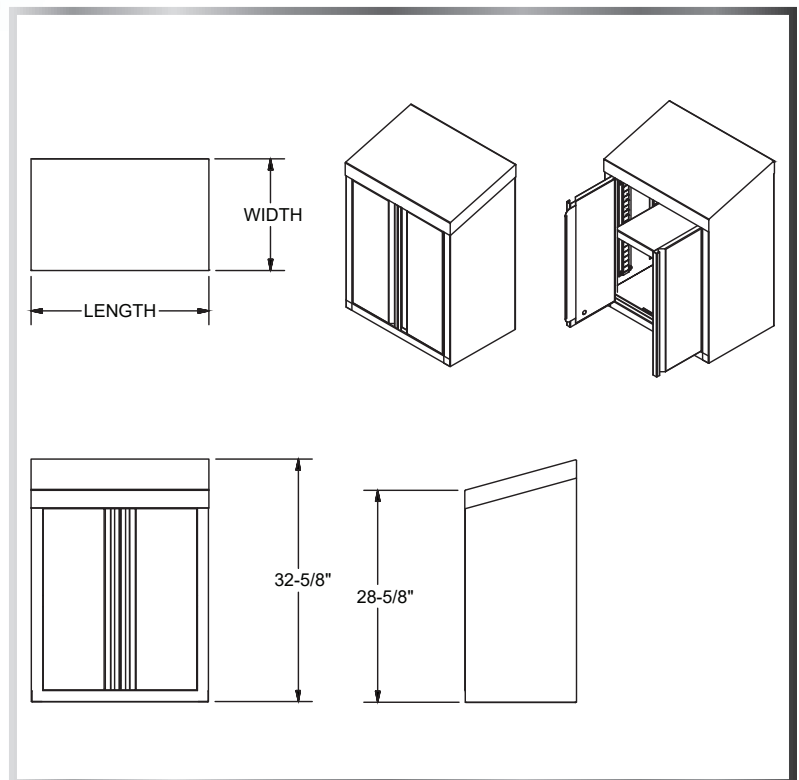


MATERIALS

- 18 Gauge 304 Stainless Steel Construction

FEATURES

- Easy Mount to Wall
- Adjustable Middle Shelf
- Two Solid Double-Pin Hinged Doors



MODEL NUMBER	LENGTH	WIDTH
WCH-1524	24"	15"
WCH-1530	30"	15"
WCH-1536	36"	15"
WCH-1548	48"	15"