

# UNDERCOUNTER SOILED DISH TABLES (RIGHT TO LEFT OPERATION)

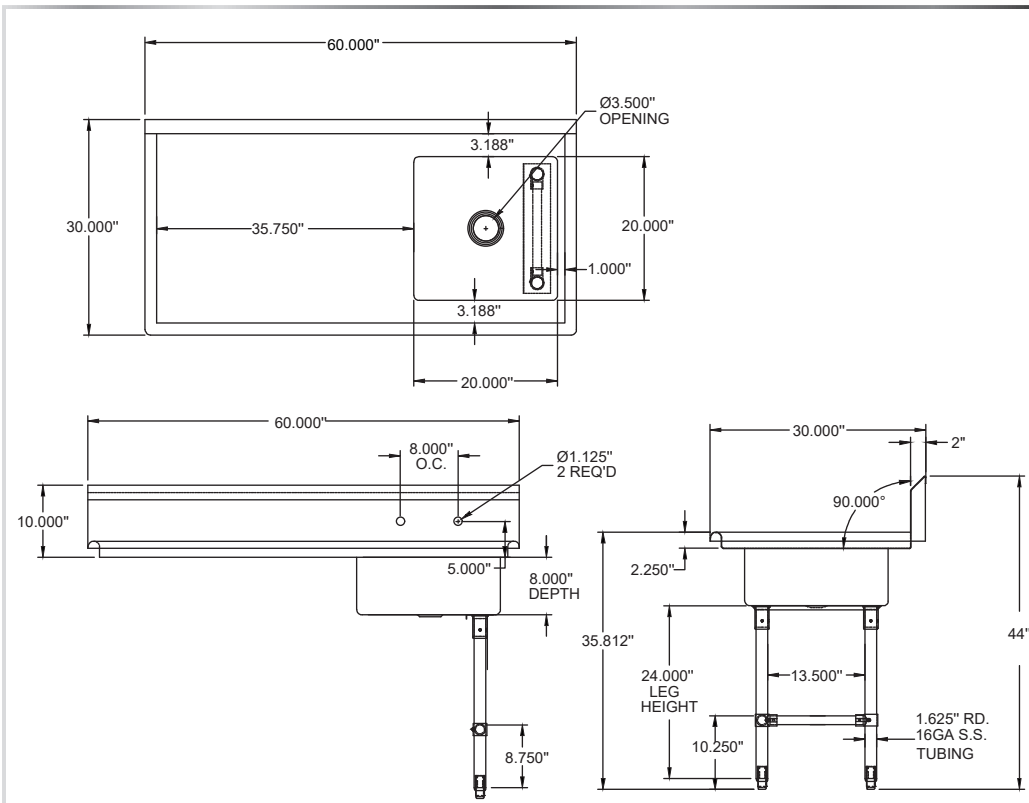
DISH TABLES - UNDERCOUNTER



## MATERIALS

- 18 Gauge 304 Stainless Steel Top
- Galvanized Legs and Bracing
- Plastic Bullet Feet

Include a Faucet, Waste Drain,  
and More With Your Order!  
(See Pages 86-91)



## FEATURES

- Straight Design
- 10" Backsplash with 2" Return to Wall At 45°
- ¾" Turned Down Rear Lip
- 8" On-Center Wall-Mounted Faucet Holes
- Drain Basket Included

MODEL NUMBER	BOWL SIZE L X W X H	LENGTH	WIDTH
UDT-50R	20" x 20" x 8"	50"	30"
UDT-60R	20" x 20" x 8"	60"	30"

(609) 642 - 8389 | SALES@NBREQUIPMENT.COM | WWW.NBREQUIPMENT.COM

NBR EQUIPMENT, 10 ABEEL ROAD, CRANBURY, NJ 08512