

UNDERCOUNTER SOILED DISH TABLE (LEFT TO RIGHT OPERATION)

DISH TABLES - UNDERCOUNTER



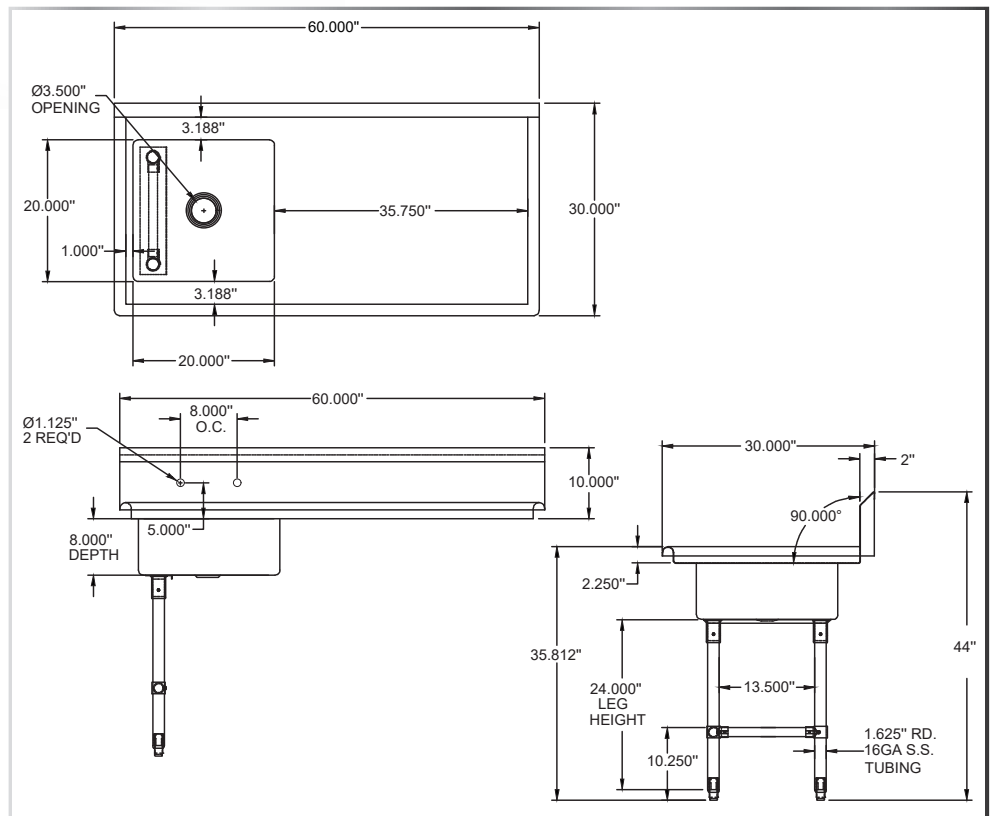
MATERIALS

- 18 Gauge 304 Stainless Steel Top
- Galvanized Legs and Bracing
- Plastic Bullet Feet

Include a Faucet, Waste Drain, and More With Your Order!
(See Pages 86-91)

FEATURES

- Straight Design
- 10" Backsplash with 2" Return to Wall At 45°
- 3/4" Turned Down Rear Lip
- 8" On-Center Wall-Mounted Faucet Holes
- Drain Basket Included



MODEL NUMBER	BOWL SIZE L X W X H	LENGTH	WIDTH
UDT-50L	20" x 20" x 8"	50"	30"
UDT-60L	20" x 20" x 8"	60"	30"