

ECONOMY SOILED DISH TABLE (RIGHT TO LEFT OPERATION)



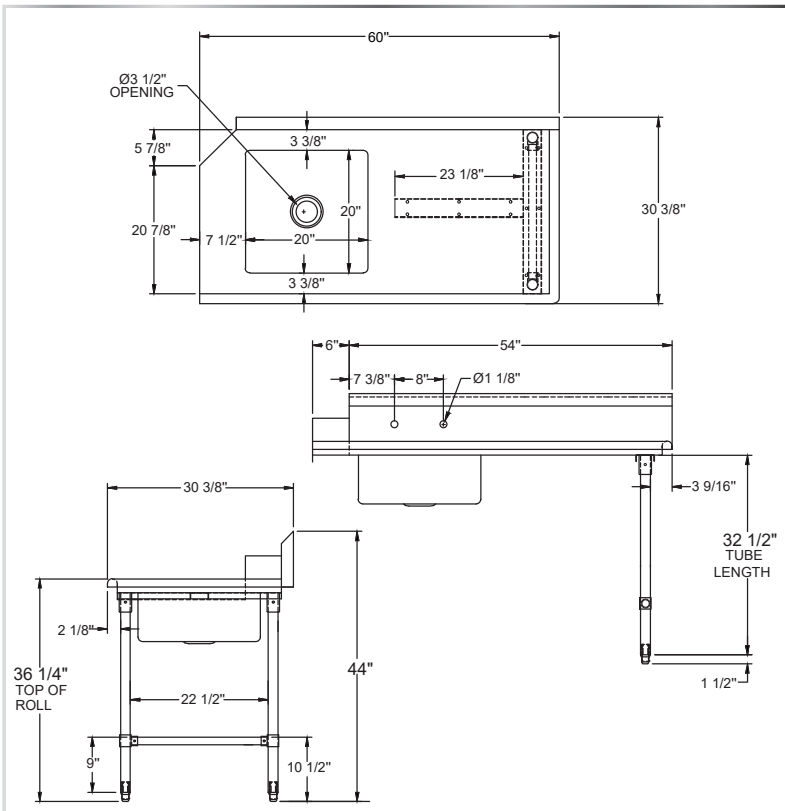
DISH TABLES - SOILED

MATERIALS

- 18 Gauge 304 Stainless Steel Top
- Galvanized Steel Legs and Gussets
- Plastic Bullet Feet



***See Page 24 For The
NEW NBR Dishable
Undershelf (DTU)***



FEATURES

- Straight Design
- 10" Backsplash with 2" Return to Wall At 45°
- 8" On-Center Wall-Mounted Faucet Holes
- Rolled Front and Side Edges
- One Deep Pre-Rinse Sink on Left Side
- Adjustable Bracing and Bullet Feet
- Drain Basket Included

Include a Faucet, Waste Drain, and More With Your Order!
(See Pages 86-91)

MODEL NUMBER	BOWL SIZE L X W X H	LENGTH	WIDTH
SDT-26R	16" x 20" x 8"	26"	30-3/8"
SDT-36R	20" x 20" x 8"	36"	30-3/8"
SDT-48R	20" x 20" x 8"	48"	30-3/8"
SDT-60R	20" x 20" x 8"	60"	30-3/8"
SDT-72R	20" x 20" x 8"	72"	30-3/8"