

Ice Bin/Cocktail Units With Cold Plate Options

NEW



Model	Length	Width	Bin Size L" x W"	Capacity
NIB-2418	24"	18-1/4"	20-3/8" x 15"	66 lbs
NIB-3018	30"	18-1/4"	25" x 15"	80 lbs
NIB-3618	36"	18-1/4"	31" x 15"	100 lbs

Details

- 18 Gauge 304 Stainless Steel
- 3" Backsplash
- 12-9/16" Deep Bins
- Includes Removable 2-Piece Sliding Lid
- Includes Drains
- Overall Height: 32-1/2"
- Stainless Steel Legs & Adjustable Bullet Feet
- With Prepunched Connection Points

Details can be found on page 21.

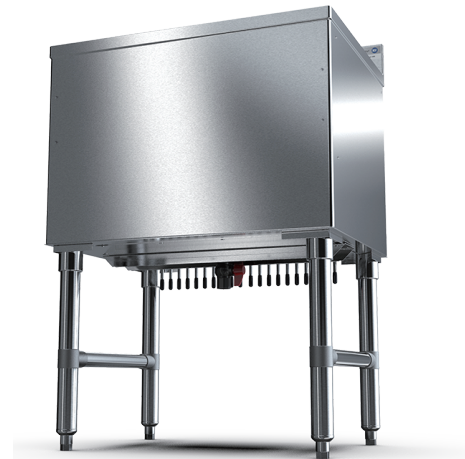
Model	Length	Width	Bin Size L" x W"	Capacity	Cold Plate Circuits
NIB-2418C7	24"	18-1/4"	20-3/8" x 15"	66 lbs	7 Circuit
NIB-3018C10	30"	18-1/4"	25" x 15"	80 lbs	10 Circuit
NIB-3618C10	36"	18-1/4"	31" x 15"	100 lbs	10 Circuit

IBC-xxxxC7 Model Details

- 7-Circuit Aluminum Cold Plate
- Stainless Steel Legs & Side Bracing

IBC-xxxxC10 Model Details

- 10-Circuit Aluminum Cold Plate
- Stainless Steel Legs & Side Bracing



NIB-3018C10

UNDERBAR - ICE BINS