



# HOT FOOD COUNTER ACCESSORIES

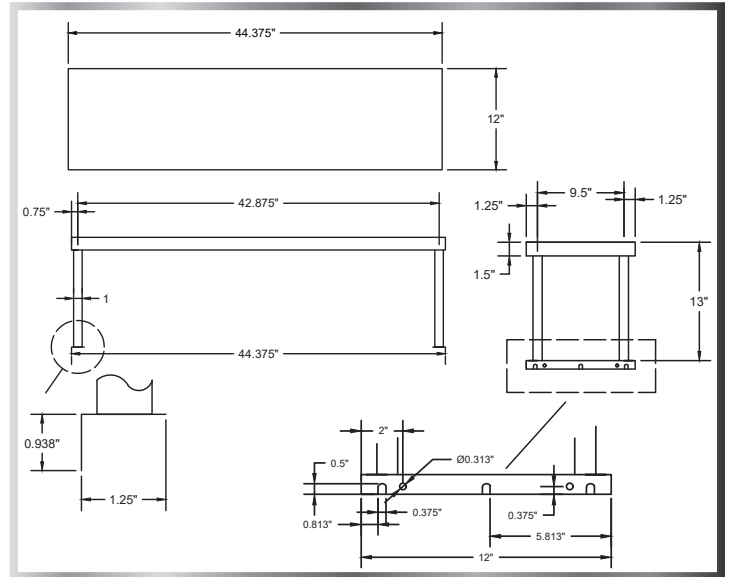


## FEATURES

- 13" of Clearance from Counter to Shelf
- 18 Gauge 304 Stainless Steel



**Over Shelf  
For Hot Food Counter**



MODEL #	LENGTH	WIDTH	FITS
HT-3-SOS	12"	44- <sup>3</sup> / <sub>8</sub> "	Three Well Hot Food Counter
HT-4-SOS	12"	58- <sup>3</sup> / <sub>8</sub> "	Four Well Hot Food Counter



**Water Pan**

## FEATURES

- Fits Open Well Hot Food Counters
- Stainless Steel



MODEL #	LENGTH	WIDTH	HEIGHT
HT-1P	21- <sup>1</sup> / <sub>4</sub> "	13- <sup>1</sup> / <sub>2</sub> "	6- <sup>1</sup> / <sub>4</sub> "

## SPARE PARTS KIT

Model #: HT-SPW or HT-SPSW

- Includes:
- Thermostat
  - Heating Element
  - Limit Switch (for SW Models)
  - Power Light



**Casters**

MODEL #	DESCRIPTION
3TP-5-PU-B & 3TP-5-PU-B-TLB (w/ Brake)	Casters for Hot Food Counter 2- <sup>3</sup> / <sub>8</sub> " x 3- <sup>5</sup> / <sub>8</sub> " Plate, 1- <sup>1</sup> / <sub>4</sub> " W Wheel, 5" Diameter