

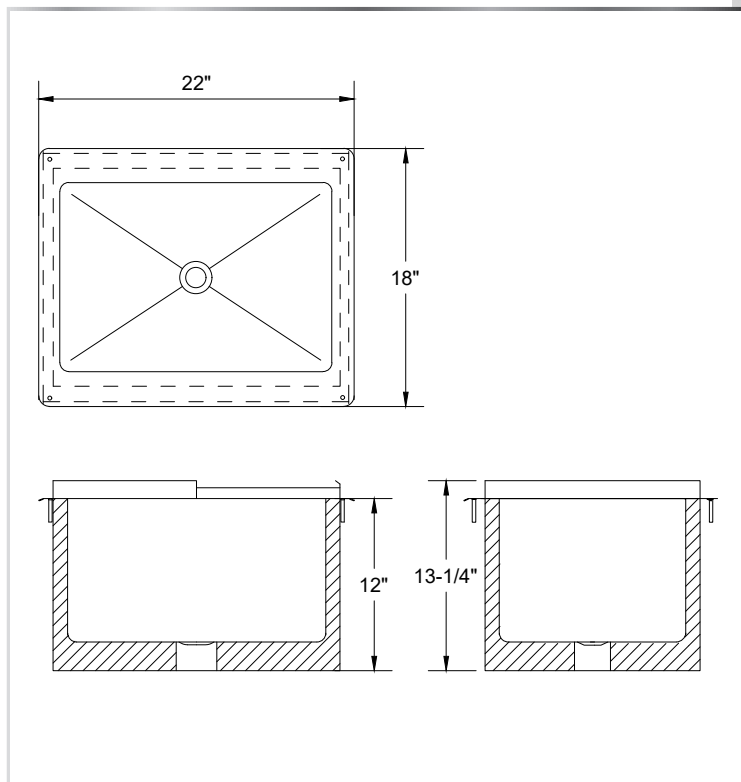
# DROP-IN ICE BIN

## UNDERBAR - ICE BINS



### MATERIALS

- 14 Gauge 304 Stainless Steel Top
- 18 Gauge 304 Stainless Steel Body and Cover



### FEATURES

- 10" Deep Insulated Bin
- Removable Sliding Lid
- Includes Drain

MODEL NUMBER	LENGTH	WIDTH	RECOMMENDED CUTOUT
DIB-1218	12"	18"	11-1/4" x 17-1/4"
DIB-2218	22"	18"	21-1/4" x 17-1/4"
DIB-2818	28"	18"	27-1/4" x 17-1/4"
DIB-3418	34"	18"	33-1/4" x 17-1/4"