

PREMIUM CLEAN DISH TABLE (RIGHT TO LEFT OPERATION)

DISH TABLES - CLEAN



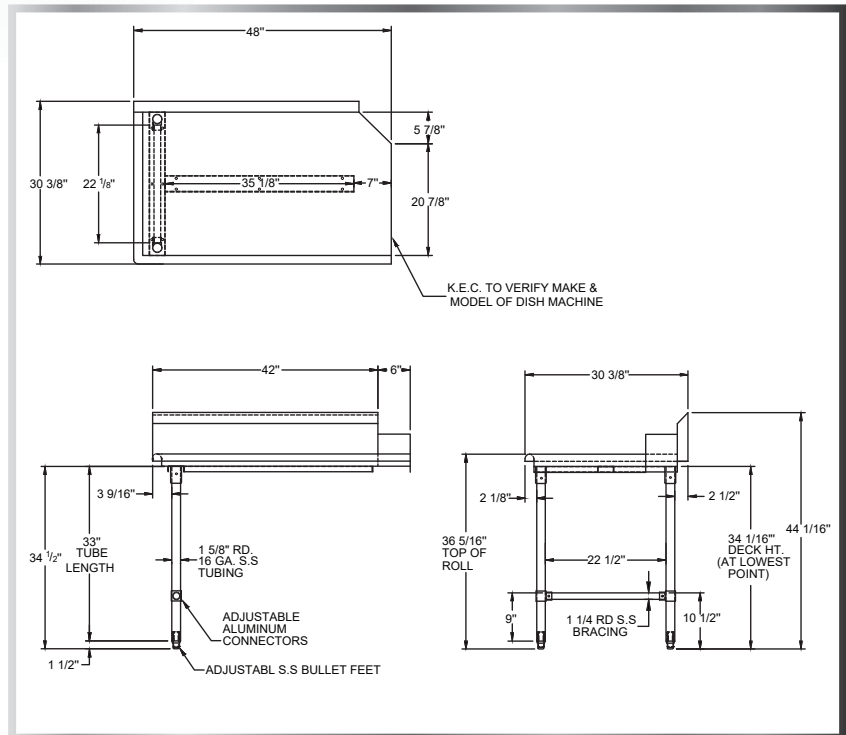
***See Page 24 For The
NEW NBR Dishable
Undershelf (DTU)***

MATERIALS

- 16 Gauge 304 Stainless Steel Top
- Stainless Steel Legs and Bullet Feet

FEATURES

- Straight Design
- 10" Backsplash with 2" Return to Wall At 45°
- Rolled Front and Side Edges
- Adjustable Bracing and Bullet Feet



MODEL NUMBER	LENGTH	WIDTH
CDT-24L-16	24"	30-3/8"
CDT-26L-16	26"	30-3/8"
CDT-36L-16	36"	30-3/8"
CDT-48L-16	48"	30-3/8"
CDT-60L-16	60"	30-3/8"
CDT-72L-16	72"	30-3/8"
CDT-96L-16	96"	30-3/8"